

Level Control NS 61-39 D 933

- VW Specification -

Technical Data

Operating pressure max. 1 bar
 Operating temperature max. 80 °C
 Spec. gravity of fluid min. 0.8 kg/dm³

Material:

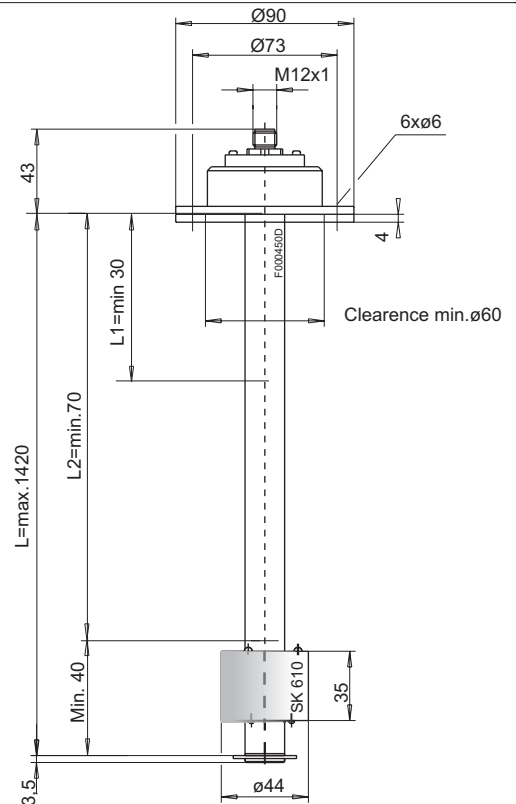
Float SK 610 hard PU
 Switch tube brass
 Flange PA 6

Level contacts

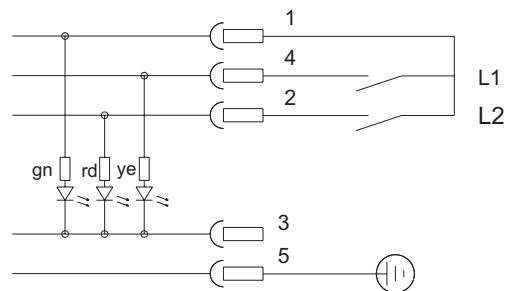
K10
 Function NO
 Min. distance of contact 40 mm
 Max. voltage 24 V
 Max. current 0.5 A
 Contact load 10 VA

Connector socket

M12 (with female plug fixed)
 Protection class IP 67
 LED-female plug not included in delivery



Wiring diagram



All figures at empty reservoir

Order Information

Type	Part No.	L	L1	L2
NS 61-39 D 933	10101399	Variable	Variable NO*	Variable NO*

NO = normally open

we reserve the right to amend specifications